



www.inspiredldn.co.uk

Albermarle Mansions, Heath Drive, NW3

£6,500PCM (Deposit: £9,000)

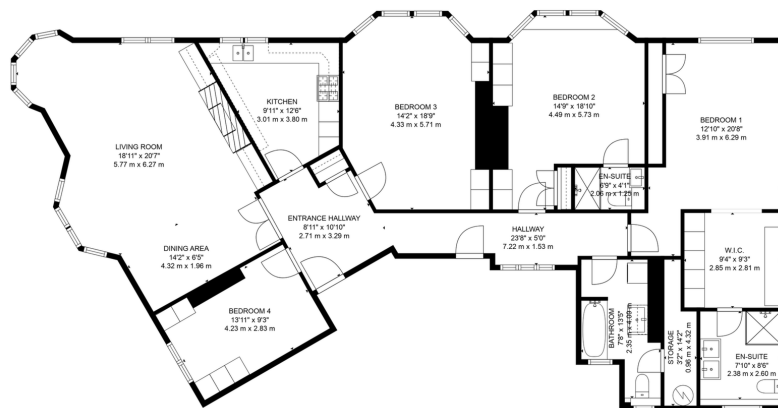
🛏️ 4 🚿 3 🚗 1

- Four spacious bedrooms
- Three bathrooms (two en-suites)
- Primary bedroom with walk-in wardrobe
- Modern kitchen with appliances
- Top local schools
- Albermarle Mansions – Edwardian charm
- Open-plan living/dining
- 1,892 sq. ft (176 m²)
- Prime Hampstead location
- Excellent transport links



Tax Band: G Furnished: Furnished

Situated on the third floor of Albermarle Mansions, an elegant Edwardian mansion block in Hampstead with lift access, this 1,963 sq. ft (182 m²) four-bedroom, three-bathroom apartment blends period charm with modern luxury. Fully furnished with high-quality furniture and appliances, it offers underfloor heating in the kitchen and two bathrooms, plus a daytime porter. The open-plan living and dining area is filled with natural light from large period windows, while the modern kitchen features high-end appliances. The primary suite has a walk-in wardrobe and en-suite, with two additional bedrooms sharing a family bathroom. Close to Hampstead Heath, boutique shops, restaurants, and Hampstead and Belsize Park stations, this property offers elegance and modern comfort in a prime London location.



TOTAL: 1892 sq. ft, 176 m²
 FLOOR 1: 1892 sq. ft, 176 m²
 EXCLUDED AREAS: STORAGE: 37 sq. ft, 3 m²; UNDEFINED: 28 sq. ft, 4 m²
 FLOOR PLAN CREATED BY CURCASA A/R - MEASUREMENTS DEEMED HIGHLY RELIABLE BUT NOT GUARANTEED.



P: 0208 187 2503

E: lettings@inspiredldn.co.uk